



Ferndale

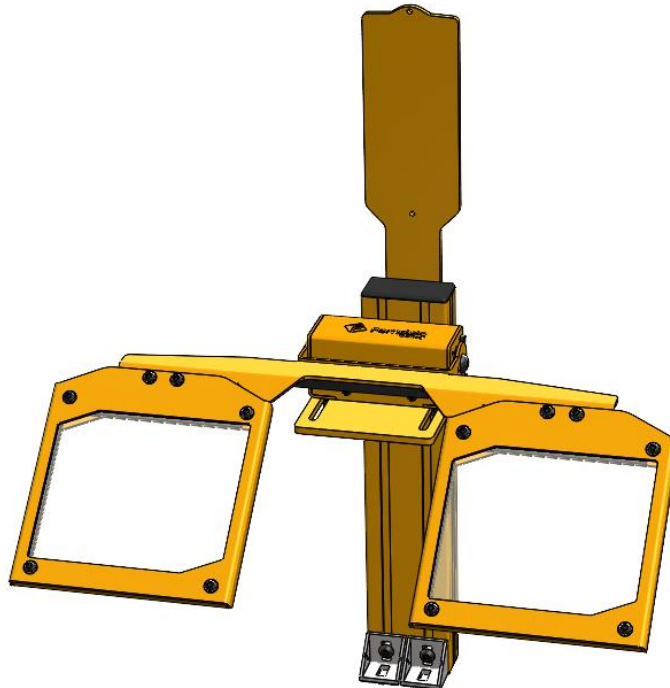
Safety

Toll-Free: 855-326-1243
<https://www.ferndalesafety.com>

**APPLIES TO MODELS:
BGS-2K/2KL
BGS-2KG/2KGL**

BENCH GRINDER SAFETY SHIELDS

INSTALLATION GUIDE.



Thank you for your purchase of our bench grinder safety shield. You now have the highest quality safety product available. Ferndale Safety designed this guard to be easy to install and provide years of trouble-free service.

Mounting and Installation

Tools required for installation (Not Included):

- Drill
- #21 drill bit
- 10-32 tap, tap wrench, and hex bolts
- Set of metric and SAE hex keys, sockets, and screwdrivers

For an electrical connection, you may need one or more of the following (Not Included).

- Wire strippers
- Utility knife
- Hole saw or step drill
- Cable glands
- Cable connectors

Please make sure that you have everything included with your shipment. Remove all packing material from the arm assembly and shield.

- 1x Screen mounting bracket.
- 1x L-shaped mounting arm and bracket with hinge.
(Depending on the model, the hinge should include an interlock switch.)
- 2x Polycarbonate or laminated safety glass screen assemblies **(Varies with model)**
- 1x LED with power supply **(Varies with model)**
- 2x base foot **(Varies with model)**

Installation

1. Remove all packing material.
2. Mount the L-shaped arm on the table with the 2x base foot and the hardware (Fig 1.)
3. Install the Screen mounting bracket on the hinge. (Fig 2.)
4. Mount the two shields onto the Screen mounting bracket. The center of each screen should be aligned with the grinder wheel. (Fig 3.)
5. Tighten the hinge and ensure the screens don't fall back when lifted. (Fig 4.)
6. Connect the safety interlock switch to your motor starter device.
7. Connect the LED lights to the power supply. **(Varies with model)**

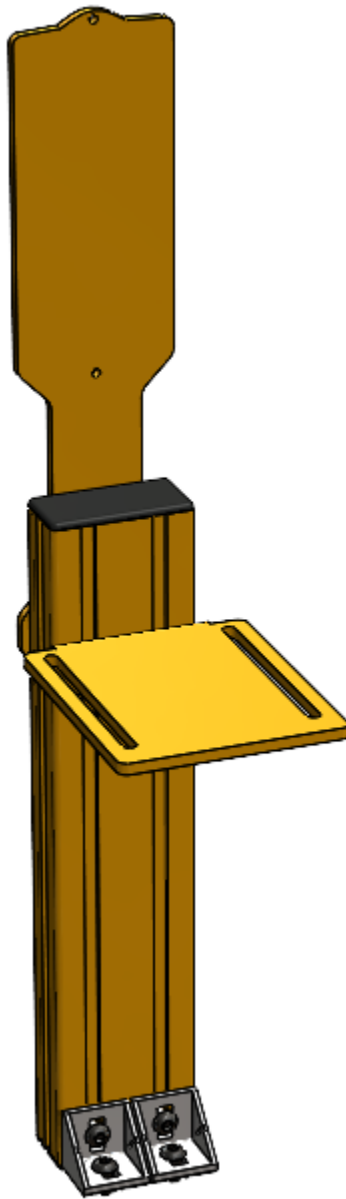


Fig. 1

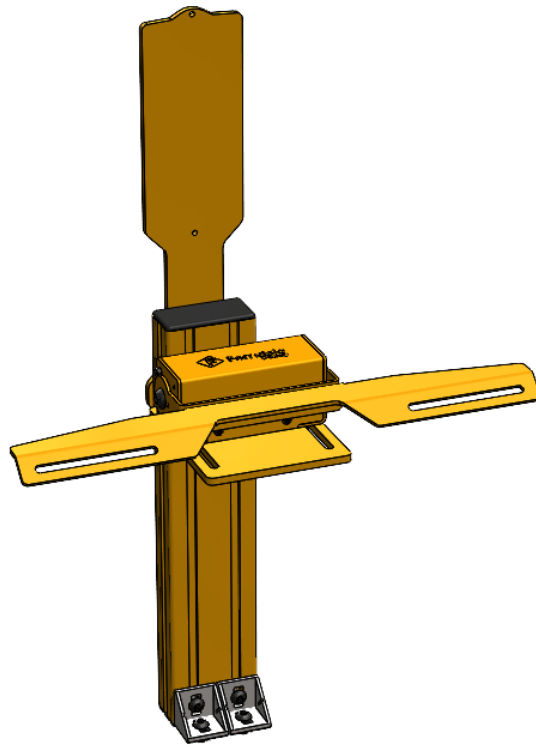


Fig. 2

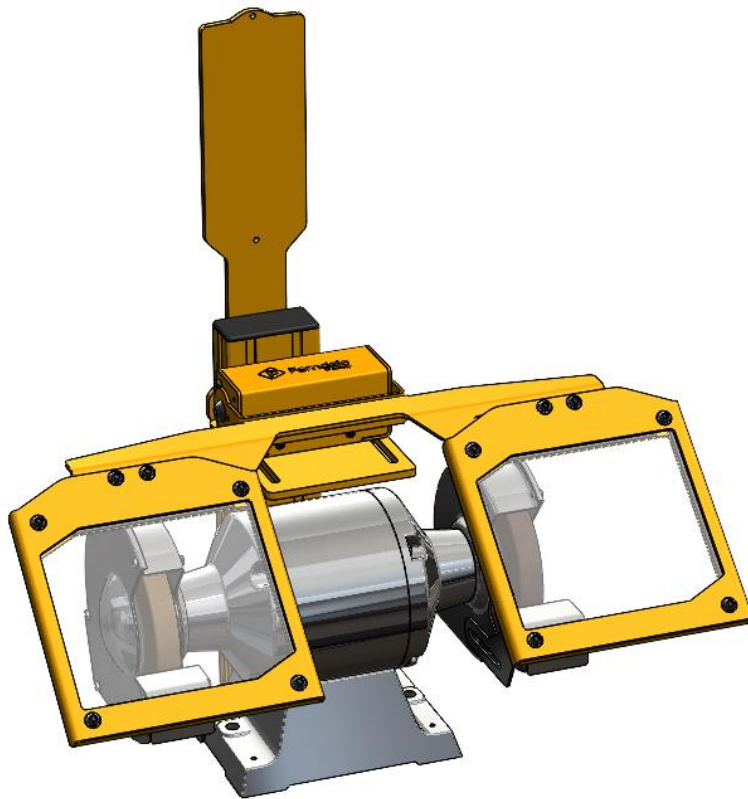


Fig. 3

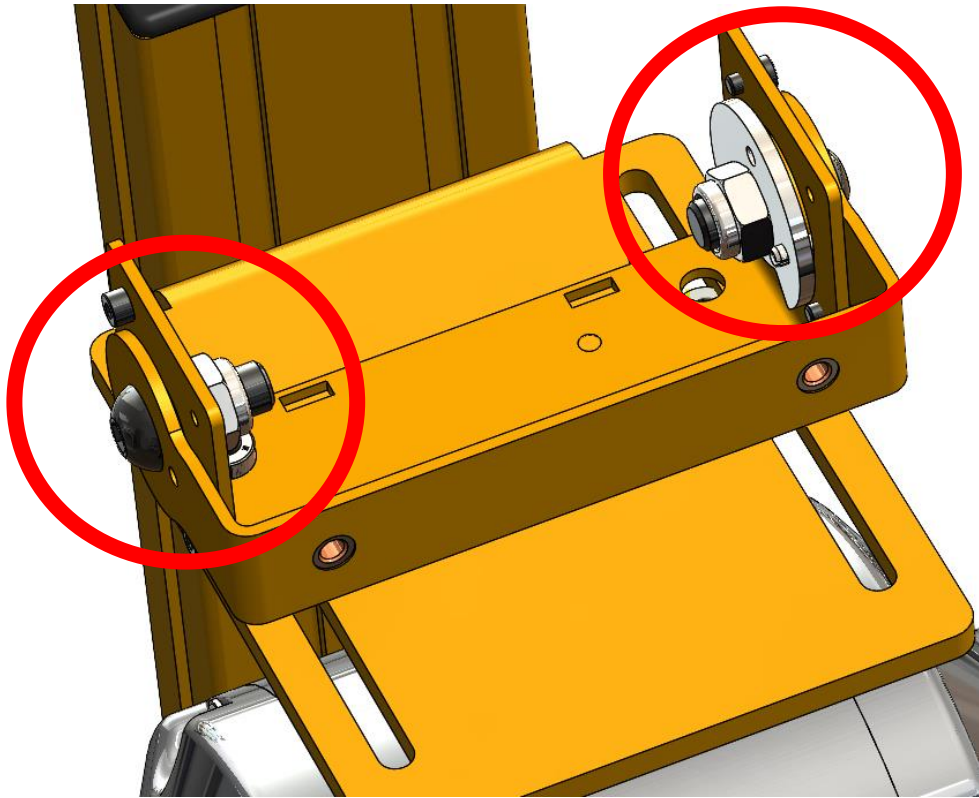
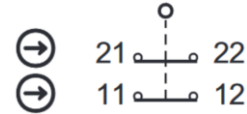


Fig. 4


Electrical Connection

Safety Interlock Switch Technical specifications

- Operational characteristics:
 - AC-15: 4A @ 230V
 - DC-13: 4A @ 24V
- Therm. Rated current I_{th} : 4A
- Ambient air conditions: -20 to +80 °C
- Mechanical life: 30 x 10⁶
- Switch model : Euchner 095372



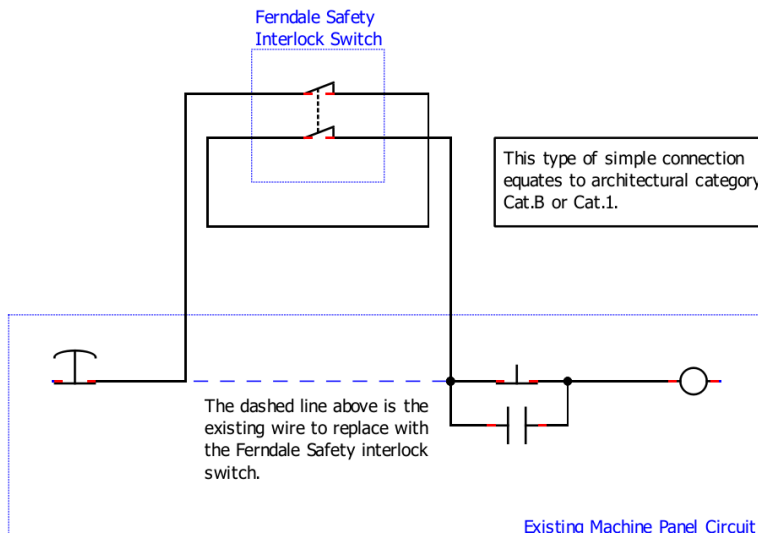
Interlock switch contact configuration

 This device is intended to be used with a Class 2 power source per UL1310.

Wire color chart

Wire #1	Terminal Wire 1	Wire #2	Terminal Wire 2	Description
Black	11	White	12	Normally Closed contact 1
Blue	22	Brown	21	Normally Closed contact 2
Green				Not Used

Connection of Interlock Switch Sample Electrical Schematic



Disclaimer:

This electrical schematic depicts a simple connection of the safety shield to the emergency stop circuit. While this diagram may be suitable for some applications, it is essential to note that electrical safety regulations and standards can vary across jurisdictions. The installer and end-user ensure compliance with applicable local, national, and international electrical safety codes, guidelines, and regulations.

Different machine architectures, safety requirements, and local regulations may necessitate more sophisticated or specific electrical designs. The depicted circuit should be a starting point for understanding the basic wiring principles. However, it is highly recommended to consult with a qualified electrical professional or seek approval from the relevant authorities before implementing this or any other electrical connection.

We strongly advise conducting a thorough risk assessment, considering all relevant factors, such as machine operation, safety interlocks, emergency stop systems, and local regulations, to ensure the safety shield's safe and compliant installation and operation. By utilizing this electrical schematic or any related information, the user acknowledges and accepts that the ultimate responsibility for adherence to applicable safety regulations rests solely with them.



Operation

Block any flying debris, chips, or coolant when the shield is properly adjusted and maintained.

You can swing the shield or the whole arm assembly away during setup. The spindle motor is disabled if the guard is wired correctly.

Maintenance

Wipe or wash all non-polycarbonate portions of this safety guard with soap and water.

The polycarbonate shield has been selected to resist direct impact and flying debris. Do not clean or contact the polycarbonate shield with brake cleaner or any carbon-based oil or cleaning products. This will void the warranty and deteriorate the polycarbonate material.

In addition to the above indications,

- Remove chips regularly.
- Wash with mild soap and water using a clean cloth.
- A paste wax may be used to erase minor scratches and to help with cleaning.

Spare parts

Obtain spare polycarbonate shields, electrical components, hardware, and other parts by calling our toll-free line at 1-855-326-1243. Please have the model number of the safety guard when you call.

Spare parts available:

- Polycarbonate or laminated glass shield
- Shield Frame
- Electrical switches
- Plastic hole plugs
- All hardware
- Felt pads for the rotation brake

WARRANTY

Ferndale Safety's Commitment:

Ferndale Safety ("FERNDALE") guarantees that its products are free from material and workmanship defects for one year from the date of purchase. Custom-made products carry a three-month (90 days) warranty from the date of purchase.

Exclusions:

This limited warranty does not cover, and FERNDALE shall have no obligation or liability with respect to, any damage, injuries or problems resulting from:

- Non-FERNDALE authorized installations.
- Insufficient maintenance, including failure to remove chips and coolant.
- Misuse, negligence, or accidents.
- Unauthorized alterations, modifications, or repairs.
- Claims on products beyond their warranty period or used contrary to their intended purpose.
- Damage due to chemical contamination or foreign objects.
- Use of FERNDALE products for "hot work"

Disclaimer:

FERNDALE MAKES NO WARRANTY OR REPRESENTATION, EXPRESSED OR IMPLIED, REGARDING NON-INFRINGEMENT, MERCHANTABILITY, OR FITNESS FOR PARTICULAR PURPOSE OF THE PRODUCTS, ANY BUYER OR USER ACKNOWLEDGES THAT THE BUYER OR USER ALONE HAS DETERMINED THAT THE PRODUCTS WILL SUITABLY MEET THE REQUIREMENTS OR THEIR INTENDED USE. FERNDALE DISCLAIMS ALL OTHER WARRANTIES, EXPRESSED OR IMPLIED.

Limitation of Liability:

FERNDALE will not be liable for any indirect, incidental, or consequential damages, including loss of profits or commercial loss, regardless of the cause. Liability for any claim shall not exceed the purchase price of the product in question. Claims related to warranty, repair, or other concerns will only be considered if FERNDALE'S evaluation confirms proper handling, storage, installation, maintenance, and absence of misuse or inappropriate modifications.

By purchasing Our Products, you agree not to use them for "hot work" (e.g., grinding, welding, soldering, cutting) due to fire risk. Misuse is forbidden, and following all safety guidelines is required. Non-compliance means you accept full responsibility for any resulting harm or damage. For your safety and the effectiveness of Our machine guarding, remain within the "Safe Work Zone" directly in front of the guarding. Standing to the side increases injury risk and breaches our usage policy. Adhering to this rule ensures your safety and the Products optimal performance. For detailed safety and operational guidelines, please see our Terms and Conditions here: <https://www.ferndalesafety.com/terms-and-conditions/>.

Product Returns & Exchanges:

Return Policy:

If dissatisfied, contact us within 30 days of receipt for a refund, excluding shipping costs, subject to inspection. Custom or special-order items are non-returnable. Returns must be in original packaging, unused, and in sellable condition, subject to a 35% restocking fee. The restocking fee is waived if the item is exchanged.

Return Authorization:

Before returning, obtain a Return Merchandise Authorization (RMA) by calling 514-326-1243. FERNDALE reserves the right to refuse returns on damaged or non-resalable items.

After 30 Days:

Returns initiated after 30 days from invoice date are subject to a 35% restocking fee and future purchase credit only, upon authorization.

Shipping Charges:

Customers bear return shipping costs, which are non-refundable. Use traceable and insured shipping methods. Customers are responsible for freight charges on canceled orders shipped prior to cancellation notice.